



2024 Geophysical Surveys

What are Geophysical Surveys?






Geophysical surveys are non-intrusive and use low energy equipment to map the seafloor and the geological layers beneath it, and to identify archaeological resources. Information collected during surveys will be used to identify habitats and cultural resources (e.g. shipwrecks or marine archaeological resources) that may need to be avoided, and to determine the physical properties of the seabed to inform selection of the mooring system technology. Geophysical data is required to develop and submit a Construction and Operations Plan (COP) to the Bureau of Ocean Energy Management (BOEM).

What type of survey equipment will Golden State Wind use?

We will use industry standard low-energy survey technology that has been routinely used in surveys off the Central Coast. Geophysical surveys will be conducted using an autonomous underwater vehicle (AUV) that will operate approximately 10-20 meters above the seabed. The AUV is equipped with multibeam echosounders, side scan sonars, and sub bottom profilers that will map and create images of the seafloor and generate vertical cross sections of the sediment layers below the seafloor. This geophysical survey technology is very different from high energy seismic airguns used in oil and gas surveys or tactical military sonar, having lower noise, higher frequency, and narrower beamwidth.





What mitigation measures are used during marine surveys?

Golden State Wind is committed to conducting geophysical surveys in a safe, environmentally responsible manner, that complies with all applicable federal, state, and local regulations. Our surveys will comply with all conditions from the combined federal and state agency review which together include:

-  Use of Protected Species Observers (PSOs) on vessels
-  Use of monitoring and shutdown zones
-  Limiting vessel speed to 10 knots
-  Marine debris awareness training for vessel crew
-  Use of low-energy geophysical survey equipment as defined in California State Regulation 2 CCR § 2100.03(g)

How will Golden State Wind communicate with fishermen and other ocean users?

Golden State Wind will implement measures to minimize conflict with other ocean users, such as commercial and recreational fisheries, as detailed in the project's Fisheries Communications Plan, which can be found on the project website. Golden State Wind will use the following methods to communicate about survey activities:

-  A dedicated Fisheries Liaison responsible for outreach via email, phone, and texts
-  USCG Local Notice to Mariners and Broadcast Notice to Mariners
-  The survey vessel will be broadcasting AIS 24/7 for other ocean users' awareness
-  At sea, communication with fishermen via VHF CH 13 and CH 16 and minimize conflict

Where and when will Golden State Wind be conducting offshore surveys?

Low-energy geophysical surveys will be conducted in federal waters through December 31, 2024. (see map)

What is the survey vessel information?

US Flagged ship: Go Adventurer

Length: 205 feet

Vessel description:

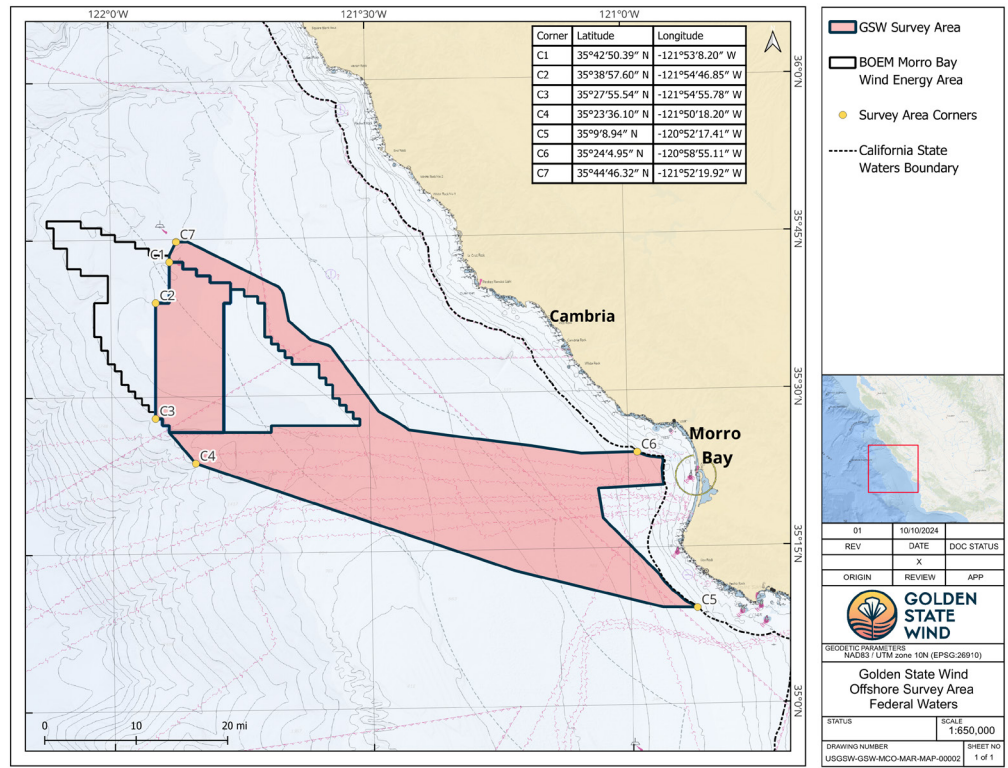
Green hull, white house

Port: Operating to and from Port Hueneme on an estimated 28-day cycle.

Call Sign: WDM7780

IMO: 9643087

MMSI: 368237180



What surveys will Golden State Wind conduct in the future?

Golden State Wind will conduct additional marine and terrestrial surveys to better understand environmental and socioeconomic resources to support design and permitting of the project. These will include marine benthic surveys, geotechnical surveys, cultural resources surveys, and ecological surveys. Golden State Wind is working with federal and state agencies to determine the surveys that will be needed for project permitting.

What permits and approvals were needed for Golden State Wind's Geophysical Surveys?

Geophysical surveys were reviewed and authorized in 2022 under the National Environmental Policy Act, the Coastal Zone Management Act, and California Coastal Act. All geophysical survey equipment will comply with applicable environmental regulations including recommendations and requirements from NOAA Fisheries' Endangered Species Act Section 7(a)(2) Concurrence Letter and Magnuson-Stevens Fishery Conservation and Management Act

Essential Fish Habitat Response for the Bureau of Ocean Energy Management's Offshore Wind Lease Issuance, Site Characterization and Assessment for the Morro Bay and Humboldt Wind Energy Areas. Golden State Wind submitted a survey plan to BOEM and the California Coastal Commission for review. In May 2024, BOEM confirmed that all mandatory comments have been adequately addressed.



GOLDEN STATE WIND



Contact Information:

Rachel Mahler
Fisheries Liaison, Golden State Wind
rachel.mahler@oceanwinds.com

Erica Crawford
Community Liaison, Golden State Wind
erica.crawford@oceanwinds.com